

# WORKSTATION JIB CRANES

KIT FORM CRANES MANUFACTURED TO YOUR SPECIFICATION



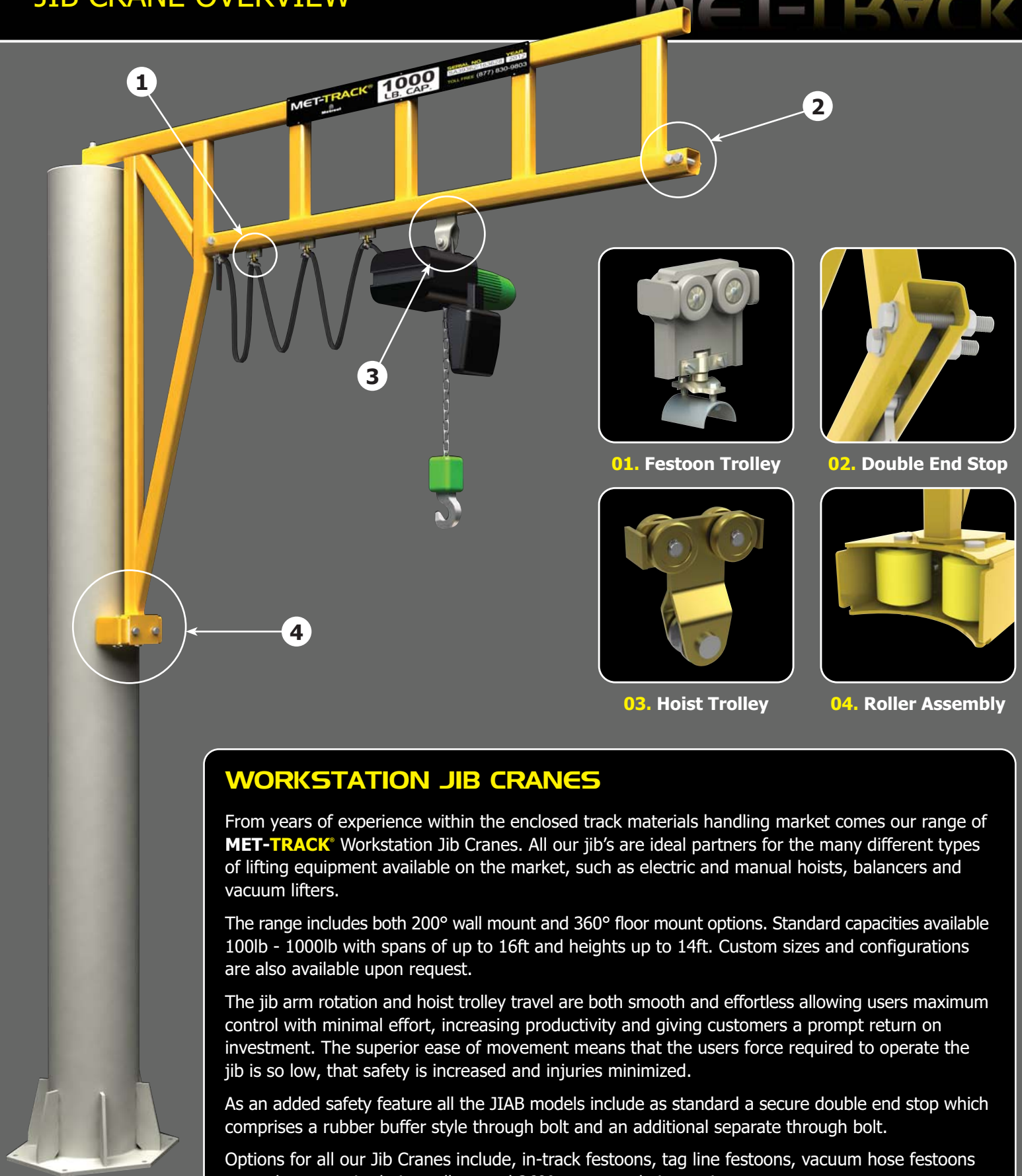
**FLOOR & WALL MOUNTED**  
CAPACITIES UP TO 5000 LBS  
SPANS UP TO 20'  
[www.metreel.com](http://www.metreel.com)

**MET-TRACK®**



# INTRODUCTION JIB CRANE OVERVIEW

# MET-TRACK®



## WORKSTATION JIB CRANES

From years of experience within the enclosed track materials handling market comes our range of **MET-TRACK®** Workstation Jib Cranes. All our jib's are ideal partners for the many different types of lifting equipment available on the market, such as electric and manual hoists, balancers and vacuum lifters.

The range includes both 200° wall mount and 360° floor mount options. Standard capacities available 100lb - 1000lb with spans of up to 16ft and heights up to 14ft. Custom sizes and configurations are also available upon request.

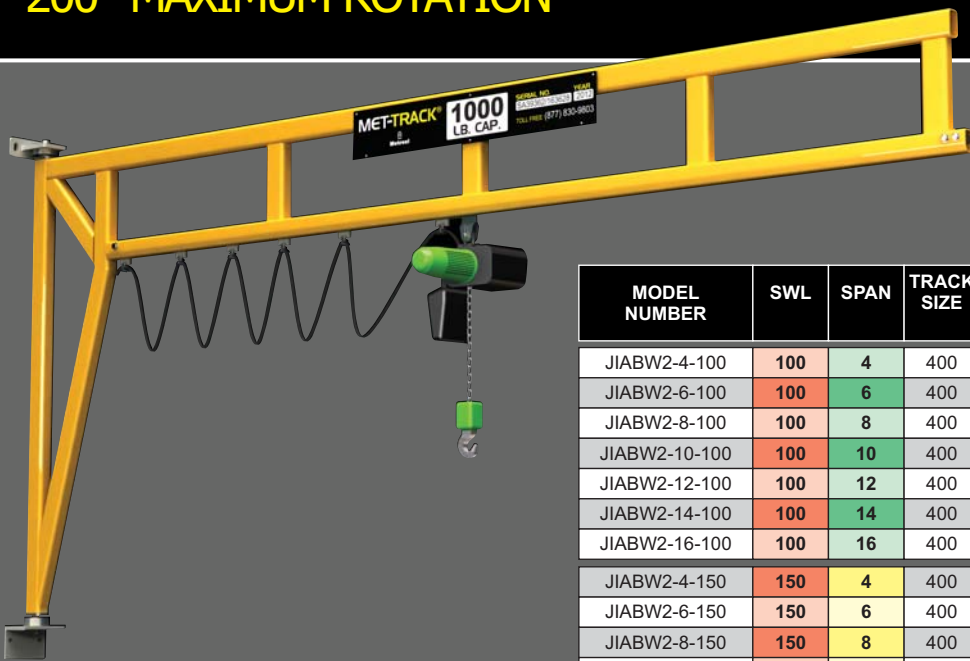
The jib arm rotation and hoist trolley travel are both smooth and effortless allowing users maximum control with minimal effort, increasing productivity and giving customers a prompt return on investment. The superior ease of movement means that the users force required to operate the jib is so low, that safety is increased and injuries minimized.

As an added safety feature all the JIAB models include as standard a secure double end stop which comprises a rubber buffer style through bolt and an additional separate through bolt.

Options for all our Jib Cranes include, in-track festoons, tag line festoons, vacuum hose festoons secondary restraint hoist trolleys and 360° power and air rotation.

# JIABW2 - WALL MOUNTED JIBS

## 200° MAXIMUM ROTATION



### JIABW2 WALL MOUNT JIB

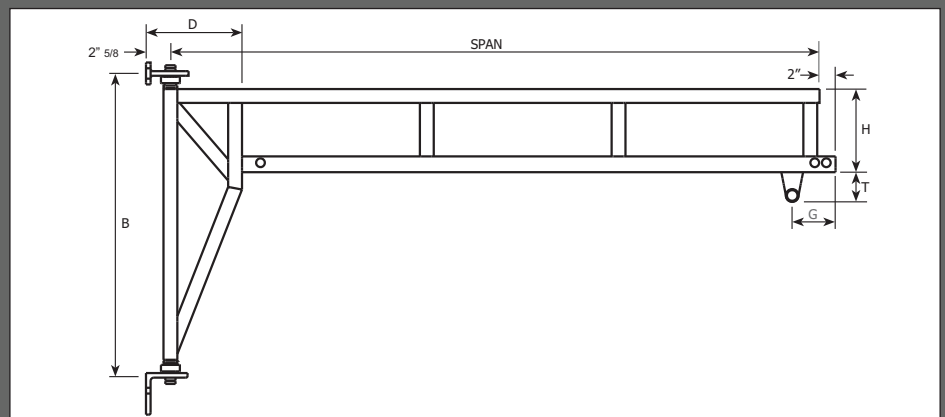
The JIABW2 range are suitable for fixing direct to a column or a wall. The efficient design of these workstation jibs increases the options of localised lifting in all types of workshop environments.

The design keeps the weight of the arm itself to a minimum which greatly reduces the effort required for operation; this is then enhanced by precision bearings on the base bracket which combine to offer a tool that everyone would be happy to use.

Ensuring the jib arm is level is very important to make sure the effort required by the user is minimized. If your structure is not completely level, the use of shims (not supplied) can be used to level the brackets in a simple no fuss manner.



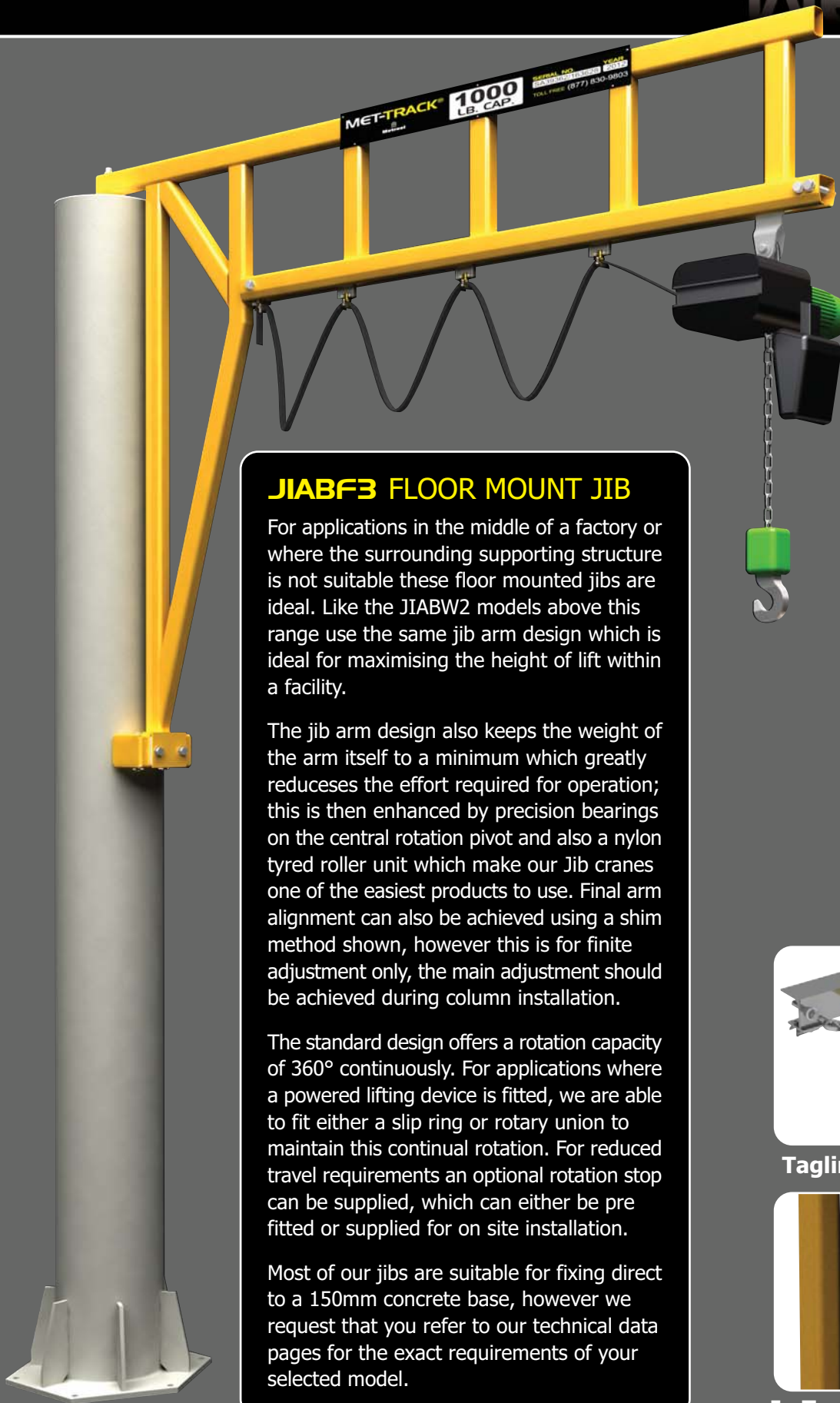
MODEL NUMBER	SWL	SPAN	TRACK SIZE	DIM B (ins)	DIM H (ins)	DIM T (ins)	DIM D (ins)	DIM G (ins)	OVERALL WEIGHT (lbs)
JIABW2-4-100	100	4	400	38	4 1/2	2 1/2	10 3/8	3 3/4	48
JIABW2-6-100	100	6	400	38	4 1/2	2 1/2	10 3/8	3 3/4	58
JIABW2-8-100	100	8	400	38	9	2 1/2	10 3/8	3 3/4	71
JIABW2-10-100	100	10	400	38	9	2 1/2	10 3/8	3 3/4	80
JIABW2-12-100	100	12	400	58 1/4	13	2 1/2	13 3/8	3 3/4	99
JIABW2-14-100	100	14	400	58 1/4	13	2 1/2	13 3/8	3 3/4	110
JIABW2-16-100	100	16	400	58 1/4	13	2 1/2	13 3/8	3 3/4	122
JIABW2-4-150	150	4	400	38	4 1/2	2 1/2	10 3/8	3 3/4	48
JIABW2-6-150	150	6	400	38	4 1/2	2 1/2	10 3/8	3 3/4	58
JIABW2-8-150	150	8	400	38	9	2 1/2	10 3/8	3 3/4	72
JIABW2-10-150	150	10	400	38	9	2 1/2	10 3/8	3 3/4	82
JIABW2-12-150	150	12	400	58 1/4	13	2 1/2	13 3/8	3 3/4	104
JIABW2-14-150	150	14	400	70 1/4	16	2 1/2	17 3/8	3 3/4	121
JIABW2-16-150	150	16	400	70 1/4	16	2 1/2	17 3/8	3 3/4	133
JIABW2-4-250	250	4	400	38	4 1/2	2 1/2	10 3/8	3 3/4	48
JIABW2-6-250	250	6	400	38	9	2 1/2	10 3/8	3 3/4	61
JIABW2-8-250	250	8	400	38	9	2 1/2	10 3/8	3 3/4	72
JIABW2-10-250	250	10	400	38	12	2 1/2	10 3/8	3 3/4	85
JIABW2-12-250	250	12	400	58 1/4	16	2 1/2	16 1/8	3 3/4	110
JIABW2-14-250	250	14	400	70 1/4	16	2 1/2	16 3/8	3 3/4	125
JIABW2-16-250	250	16	400	70 1/4	16	2 1/2	16 3/8	3 3/4	149
JIABW2-4-500	500	4	500	38 3/4	9	3	10 1/8	5 3/8	90
JIABW2-6-500	500	6	500	38 3/4	9	3	10 1/8	5 3/8	110
JIABW2-8-500	500	8	500	58 7/8	12	3	13 1/8	5 3/8	156
JIABW2-10-500	500	10	500	58 7/8	12	3	13 1/8	5 3/8	176
JIABW2-12-500	500	12	500	70 7/8	15	3	15 7/8	5 3/8	218
JIABW2-14-500	500	14	500	70 7/8	17 1/2	3	16 1/8	5 3/8	250
JIABW2-16-500	500	16	500	70 7/8	17 1/2	3	16 1/8	5 3/8	270
JIABW2-4-1000	1000	4	600	38 3/4	9	3 5/8	10 1/8	5 7/8	98
JIABW2-6-1000	1000	6	600	38 3/4	9	3 5/8	10 1/8	5 7/8	123
JIABW2-8-1000	1000	8	600	58 7/8	12	3 5/8	13 1/8	5 7/8	173
JIABW2-10-1000	1000	10	600	70 7/8	15	3 5/8	16 1/8	5 7/8	219
JIABW2-12-1000	1000	12	600	70 7/8	20	3 5/8	16 1/8	5 7/8	264
JIABW2-14-1000	1000	14	600	80 7/8	20	3 5/8	19 1/8	5 7/8	303
JIABW2-16-1000	1000	16	600	80 7/8	20	3 5/8	19 1/8	5 7/8	334



# JIABF3 - FLOOR MOUNTED JIBS

## 360° MAXIMUM ROTATION

# MET-TRACK®



### JIABF3 FLOOR MOUNT JIB

For applications in the middle of a factory or where the surrounding supporting structure is not suitable these floor mounted jibs are ideal. Like the JIABW2 models above this range use the same jib arm design which is ideal for maximising the height of lift within a facility.

The jib arm design also keeps the weight of the arm itself to a minimum which greatly reduces the effort required for operation; this is then enhanced by precision bearings on the central rotation pivot and also a nylon tyred roller unit which make our Jib cranes one of the easiest products to use. Final arm alignment can also be achieved using a shim method shown, however this is for finite adjustment only, the main adjustment should be achieved during column installation.

The standard design offers a rotation capacity of 360° continuously. For applications where a powered lifting device is fitted, we are able to fit either a slip ring or rotary union to maintain this continual rotation. For reduced travel requirements an optional rotation stop can be supplied, which can either be pre fitted or supplied for on site installation.

Most of our jibs are suitable for fixing direct to a 150mm concrete base, however we request that you refer to our technical data pages for the exact requirements of your selected model.

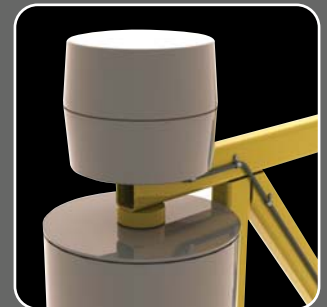
### JIABF3 FLOOR MOUNTED JIB ACCESSORIES



Rotational Stop



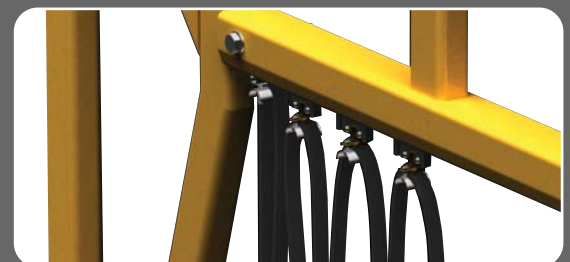
Friction Brake



360° Rotation



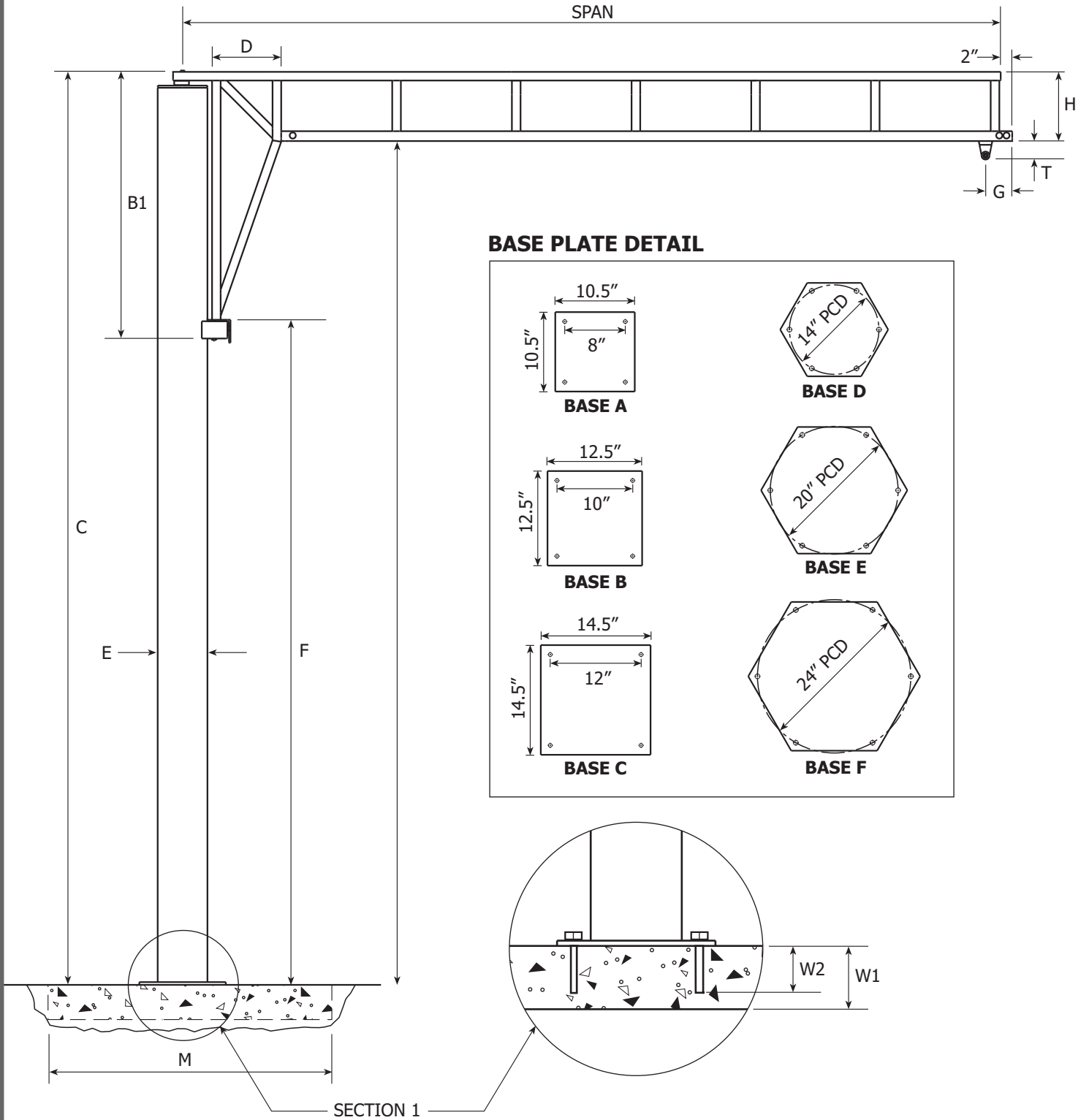
Tagline Festoon (Available for all Jib Cranes)



In Track Festoon (Available for all Jib Cranes)

# JIABF3 - FLOOR MOUNTED JIBS

## 360° MAXIMUM ROTATION



MODEL NUMBER	SWL	HUB	SPAN	TRACK SIZE	DIM D (ins)	DIM B1 (ins)	DIM F (ins)	DIM H (ins)	DIM G (ins)	DIM T (ins)	DIM C (ins)	DIM W1 (ins)	DIM W2 (ins)	BASE PLATE (ins)	BOLT SIZE (ins)	DIM M (ins)	OVERALL WEIGHT (lbs)
JIABF3-4-8-100	100	8	4	400	9 7/8	31 1/4	71 3/4	4 1/4	3 3/4	2 1/2	100 1/4	6	4 1/2	A	1/2	30	231
JIABF3-6-8-100	100	8	6	400	9 7/8	32 7/8	70	4 1/4	3 3/4	2 1/2	100 1/4	6	4 1/2	A	1/2	36	241
JIABF3-8-8-100	100	8	8	400	10 3/4	32 7/8	74 3/4	9	3 3/4	2 1/2	105	6	4 1/2	A	1/2	48	263
JIABF3-10-8-100	100	8	10	400	10 3/4	34 3/4	74 3/4	9	3 3/4	2 1/2	105	6	4 1/2	B	1/2	48	367
JIABF3-12-8-100	100	8	12	400	13 3/4	46 3/4	65 3/4	12	3 3/4	2 1/2	108	6	4 1/2	B	1/2	48	393
JIABF3-14-8-100	100	8	14	400	13 3/4	46 3/4	65 3/4	12	3 3/4	2 1/2	108	8	4 1/2	B	1/2	48	404
JIABF3-16-8-100	100	8	16	400	13 3/4	46 3/4	65 3/4	12	3 3/4	2 1/2	108	10	4 1/2	B	1/2	48	415
JIABF3-4-10-100	100	10	4	400	9 7/8	31 7/8	94 7/8	4 1/4	3 3/4	2 1/2	124 1/4	6	4 1/2	A	1/2	30	270
JIABF3-6-10-100	100	10	6	400	9 7/8	32 7/8	90	4 1/4	3 3/4	2 1/2	124 1/4	6	4 1/2	A	1/2	36	280
JIABF3-8-10-100	100	10	8	400	10 3/4	32 7/8	98 3/4	9	3 3/4	2 1/2	129	6	4 1/2	A	1/2	48	300
JIABF3-10-10-100	100	10	10	400	10 3/4	34 3/4	98 3/4	9	3 3/4	2 1/2	129	6	4 1/2	B	1/2	48	427
JIABF3-12-10-100	100	10	12	400	13 3/4	46 3/4	89 3/4	12	3 3/4	2 1/2	132	6	4 1/2	B	1/2	48	453
JIABF3-14-10-100	100	10	14	400	13 3/4	46 3/4	89 3/4	12	3 3/4	2 1/2	132	8	4 1/2	B	1/2	48	464
JIABF3-16-10-100	100	10	16	400	13 3/4	46 3/4	89 3/4	12	3 3/4	2 1/2	132	10	4 1/2	B	1/2	48	475
JIABF3-4-12-100	100	12	4	400	9 7/8	31 7/8	118 7/8	4 1/4	3 3/4	2 1/2	148 1/4	6	4 1/2	A	1/2	30	310
JIABF3-6-12-100	100	12	6	400	9 7/8	32 7/8	118	4 1/4	3 3/4	2 1/2	148 1/4	6	4 1/2	A	1/2	36	319
JIABF3-8-12-100	100	12	8	400	10 3/4	32 7/8	122 3/4	9	3 3/4	2 1/2	153	6	4 1/2	A	1/2	48	339
JIABF3-10-12-100	100	12	10	400	10 3/4	34 3/4	122 3/4	9	3 3/4	2 1/2	153	6	4 1/2	B	1/2	48	487
JIABF3-12-12-100	100	12	12	400	13 3/4	46 3/4	113 3/4	12	3 3/4	2 1/2	156	6	4 1/2	B	1/2	48	511
JIABF3-14-12-100	100	12	14	400	13 3/4	46 3/4	113 3/4	12	3 3/4	2 1/2	156	8	4 1/2	B	1/2	48	522
JIABF3-16-12-100	100	12	16	400	13 3/4	46 3/4	113 3/4	12	3 3/4	2 1/2	156	10	4 1/2	B	1/2	48	533
JIABF3-4-14-100	100	14	4	400	9 7/8	31 7/8	142 7/8	4 1/4	3 3/4	2 1/2	172 1/4	6	4 1/2	A	1/2	30	349
JIABF3-6-14-100	100	14	6	400	9 7/8	34 3/4	142	4 1/4	3 3/4	2 1/2	172 1/4	6	4 1/2	B	1/2	36	511
JIABF3-8-14-100	100	14	8	400	10 3/4	34 3/4	146 3/4	9	3 3/4	2 1/2	177	6	4 1/2	B	1/2	48	538
JIABF3-10-14-100	100	14	10	400	10 3/4	34 3/4	146 3/4	9	3 3/4	2 1/2	177	6	4 1/2	B	1/2	48	547
JIABF3-12-14-100	100	14	12	400	13 3/4	46 3/4	137 3/4	12	3 3/4	2 1/2	180	6	4 1/2	B	1/2	48	573
JIABF3-14-14-100	100	14	14	400	13 3/4	46 3/4	137 3/4	12	3 3/4	2 1/2	180	8	4 1/2	B	1/2	48	584
JIABF3-16-14-100	100	14	16	400	13 3/4	46 3/4	137 3/4	12	3 3/4	2 1/2	180	10	4 1/2	B	1/2	48	596
JIABF3-4-8-150	150	8	4	400	9 7/8	23 3/4	80 7/8	4 1/4	3 3/4	2 1/2	100 1/4	6	4 1/2	B	1/2	36	324
JIABF3-6-8-150	150	8	6	400	9 7/8	27 3/4	76 7/8	4 1/4	3 3/4	2 1/2	100 1/4	6	4 1/2	B	1/2	48	333
JIABF3-8-8-150	150	8	8	400	10 3/4	34 1/2	74 7/8	9	3 3/4	2 1/2	105	6	4 1/2	B	1/2	48	358
JIABF3-10-8-150	150	8	10	400	10 3/4	34 1/2	74 7/8	9	3 3/4	2 1/2	105	8	4 1/2	B	1/2	48	369
JIABF3-12-8-150	150	8	12	400	13	33 7/8	78 1/2	12	3 3/4	2 1/2	108	10	4 1/2	B	1/2	48	398
JIABF3-14-8-150	150	8	14	400	17 1/4	58 1/2	56 7/8	15	3 3/4	2 1/2	111	12	4 1/2	B	1/2	48	422
JIABF3-16-8-150	150	8	16	400	17 1/4	58 1/2	56 7/8	15	3 3/4	2 1/2	111	14	4 1/2	B	1/2	48	433
JIABF3-4-10-150	150	10	4	400	9 7/8	23 3/4	104 7/8	4 1/4	3 3/4	2 1/2	124 1/4	6	4 1/2	B	1/2	36	384
JIABF3-6-10-150	150	10	6	400	9 7/8	27 3/4	100 7/8	4 1/4	3 3/4	2 1/2	124 1/4	6	4 1/2	B	1/2	48	393
JIABF3-8-10-150	150	10	8	400	10 3/4	34 1/2	98 7/8	9	3 3/4	2 1/2	129	6	4 1/2	B	1/2	48	419
JIABF3-10-10-150	150	10	10	400	10 3/4	34 1/2	98 7/8	9	3 3/4	2 1/2	129	8	4 1/2	B	1/2	48	429
JIABF3-12-10-150	150	10	12	400	13	33 7/8	102 1/2	12	3 3/4	2 1/2	132	10	4 1/2	B	1/2	48	458
JIABF3-14-10-150	150	10	14	400	17 1/4	58 1/2	80 7/8	15	3 3/4	2 1/2	135	12	4 1/2	B	1/2	48	482
JIABF3-16-10-150	150	10	16	400	17 1/4	58 1/2	80 7/8	15	3 3/4	2 1/2	135	14	4 1/2	B	1/2	48	493
JIABF3-4-12-150	150	12	4	400	9 7/8	23 3/4	128 7/8	4 1/4	3 3/4	2 1/2	148 1/4	6	4 1/2	B	1/2	36	444
JIABF3-6-12-150	150	12	6	400	9 7/8	27 3/4	124 7/8	4 1/4	3 3/4	2 1/2	148 1/4	6	4 1/2	B	1/2	48	545
JIABF3-8-12-150	150	12	8	400	10 3/4	34 1/2	122 7/8	9	3 3/4	2 1/2	153	6	4 1/2	B	1/2	48	479
JIABF3-10-12-150	150	12	10	400	10 3/4	34 1/2	122 7/8	9	3 3/4	2 1/2	153	8	4 1/2	B	1/2	48	489
JIABF3-12-12-150	150	12	12	400	13	33 7/8	126 1/2	12	3 3/4	2 1/2	156	10	4 1/2	B	1/2	48	516
JIABF3-14-12-150	150	12	14	400	17 1/4	58 1/2	104 7/8	15	3 3/4	2 1/2	159	12	4 1/2	B	1/2	48	542
JIABF3-16-12-150	150	12	16	400	17 1/4	58 1/2	104 7/8	15	3 3/4	2 1/2	159	14	4 1/2	B	1/2	48	554
JIABF3-4-14-150	150	14	4	400	9 7/8	23 3/4	152 7/8	4 1/4	3 3/4	2 1/2	172 1/4	6	4 1/2	B	1/2	36	501
JIABF3-6-14-150	150	14	6	400	9 7/8	27 3/4	148 7/8	4 1/4	3 3/4	2 1/2	172 1/4	6	4 1/2	B	1/2	48	511
JIABF3-8-14-150	150	14	8	400	10 3/4	34 1/2	146 7/8	9	3 3/4	2 1/2	177	6	4 1/2	B	1/2	48	539
JIABF3-10-14-150	150	14	10	400	10 3/4	34 1/2	146 7/8	9	3 3/4	2 1/2	177	8	4 1/2	B	1/2	48	549
JIABF3-12-14-150	150	14	12	400	13	33 7/8	150 1/2	12	3 3/4	2 1/2	180	10	4 1/2	B	1/2	48	578
JIABF3-14-14-150	150	14	14	400	17 1/4	58 1/2	128 7/8	15	3 3/4	2 1/2	183	12	4 1/2	B	1/2	48	602
JIABF3-16-14-150	150	14	16	400	17 1/4	58 1/2	128 7/8	15	3 3/4	2 1/2	183	14	4 1/2	B	1/2	48	614

# JIABF3 - FLOOR MOUNTED JIBS

## 360° MAXIMUM ROTATION

MODEL NUMBER	SWL	HUB	SPAN	TRACK SIZE	DIM D (ins)	DIM B1 (ins)	DIM F (ins)	DIM H (ins)	DIM G (ins)	DIM T (ins)	DIM C (ins)	DIM W1 (ins)	DIM W2 (ins)	BASE PLATE (ins)	BOLT SIZE (ins)	DIM M (ins)	OVERALL WEIGHT (lbs)
JIABF3-4-8-250	250	8	4	400	9 7/8	23 3/4	80 7/8	4 1/4	3 3/4	2 1/2	100 1/4	6	4 1/2	B	1/2	48	324
JIABF3-6-8-250	250	8	6	400	9 7/8	32 1/2	76 7/8	9	3 3/4	2 1/2	105	6	4 1/2	B	1/2	48	348
JIABF3-8-8-250	250	8	8	400	10 3/4	32 1/2	76 7/8	9	3 3/4	2 1/2	105	10	4 1/2	B	1/2	48	358
JIABF3-10-8-250	250	8	10	400	10 3/4	37 1/2	74 7/8	12	3 3/4	2 1/2	108	12	4 1/2	B	1/2	48	379
JIABF3-12-8-250	250	8	12	400	13	33 7/8	81 1/2	15	3 3/4	2 1/2	111	16	4 1/2	B	1/2	48	410
JIABF3-14-8-250	250	8	14	400	17 1/4	59 1/8	56 7/8	15	3 3/4	2 1/2	111	20	4 1/2	C	5/8	48	523
JIABF3-16-8-250	250	8	16	400	17 1/4	59 1/8	56 7/8	15	3 3/4	2 1/2	111	22	4 1/2	C	5/8	48	547
JIABF3-4-10-250	250	10	4	400	9 7/8	23 3/4	104 7/8	4 1/4	3 3/4	2 1/2	124 1/4	6	4 1/2	B	1/2	48	384
JIABF3-6-10-250	250	10	6	400	9 7/8	32 1/2	100 7/8	9	3 3/4	2 1/2	129	6	4 1/2	B	1/2	48	408
JIABF3-8-10-250	250	10	8	400	9 7/8	32 1/2	100 7/8	9	3 3/4	2 1/2	129	10	4 1/2	B	1/2	48	419
JIABF3-10-10-250	250	10	10	400	13 3/4	37 1/2	98 7/8	12	3 3/4	2 1/2	132	12	4 1/2	B	1/2	48	439
JIABF3-12-10-250	250	10	12	400	13	4 3/8	135	15	3 3/4	2 1/2	135	16	4 1/2	B	1/2	48	470
JIABF3-14-10-250	250	10	14	400	17 1/4	20	120	15	3 3/4	2 1/2	135	18	4 1/2	C	5/8	48	583
JIABF3-16-10-250	250	10	16	400	17 1/4	34 1/2	105 1/2	15	3 3/4	2 1/2	135	20	4 1/2	C	5/8	48	693
JIABF3-4-12-250	250	12	4	400	9 7/8	23 3/4	128 7/8	4 1/4	3 3/4	2 1/2	148 1/4	6	4 1/2	B	1/2	48	444
JIABF3-6-12-250	250	12	6	400	9 7/8	32 1/2	124 7/8	9	3 3/4	2 1/2	153	6	4 1/2	B	1/2	48	468
JIABF3-8-12-250	250	12	8	400	9 7/8	32 1/2	124 7/8	9	3 3/4	2 1/2	153	10	4 1/2	B	1/2	48	479
JIABF3-10-12-250	250	12	10	400	13 3/4	37 1/2	122 7/8	12	3 3/4	2 1/2	156	12	4 1/2	B	1/2	48	497
JIABF3-12-12-250	250	12	12	400	13	33 7/8	129 1/2	15	3 3/4	2 1/2	159	16	4 1/2	B	1/2	48	530
JIABF3-14-12-250	250	12	14	400	17 1/4	49 1/2	114 1/2	15	3 3/4	2 1/2	159	18	4 1/2	C	5/8	48	708
JIABF3-16-12-250	250	12	16	400	17 1/4	34 1/2	129 1/2	15	3 3/4	2 1/2	159	20	4 1/2	C	5/8	48	746
JIABF3-4-14-250	250	14	4	400	9 7/8	23 3/4	152 7/8	4 1/4	3 3/4	2 1/2	172 1/4	6	4 1/2	B	1/2	48	501
JIABF3-6-14-250	250	14	6	400	9 7/8	32 1/2	148 7/8	9	3 3/4	2 1/2	177	6	4 1/2	B	1/2	48	528
JIABF3-8-14-250	250	14	8	400	9 7/8	32 1/2	148 7/8	9	3 3/4	2 1/2	177	10	4 1/2	B	1/2	48	539
JIABF3-10-14-250	250	14	10	400	13 3/4	37 1/2	146 7/8	12	3 3/4	2 1/2	180	12	4 1/2	B	1/2	48	559
JIABF3-12-14-250	250	14	12	400	13	33 7/8	153 1/2	15	3 3/4	2 1/2	183	16	4 1/2	B	1/2	48	591
JIABF3-14-14-250	250	14	14	400	17 1/4	20	168	15	3 3/4	2 1/2	183	18	4 1/2	C	5/8	48	752
JIABF3-16-14-250	250	14	16	400	17 1/4	34 1/2	153 1/2	15	3 3/4	2 1/2	183	20	4 1/2	C	5/8	48	847
JIABF3-4-8-500	500	8	4	500	9 3/4	31 5/8	78 3/8	9	5 3/8	3	105	8	4 1/2	D	5/8	48	502
JIABF3-6-8-500	500	8	6	500	9 3/4	31 5/8	78 3/8	9	5 3/8	3	105	14	4 1/2	D	5/8	48	521
JIABF3-8-8-500	500	8	8	500	13 3/4	39 5/8	73 3/8	12	5 3/8	3	108	14	4 1/2	D	5/8	60	563
JIABF3-10-8-500	500	8	10	500	13 5/8	39 5/8	73 3/8	12	5 3/8	3	108	14	4 1/2	D	5/8	60	583
JIABF3-12-8-500	500	8	12	500	13 5/8	57 3/4	58 1/4	15	5 3/8	3	111	16	4 1/2	E	5/8	60	773
JIABF3-14-8-500	500	8	14	500	17 1/4	57 3/4	60 3/4	17 1/2	5 3/8	3	113 1/2	20	4 1/2	E	5/8	60	816
JIABF3-16-8-500	500	8	16	500	17 1/4	57 3/4	60 3/4	17 1/2	5 3/8	3	113 1/2	24	4 1/2	E	5/8	60	836
JIABF3-4-10-500	500	10	4	500	9 3/4	31 5/8	102 3/8	9	5 3/8	3	129	8	4 1/2	D	5/8	48	582
JIABF3-6-10-500	500	10	6	500	9 3/4	31 5/8	102 3/8	9	5 3/8	3	129	14	4 1/2	D	5/8	48	602
JIABF3-8-10-500	500	10	8	500	13 3/4	39 5/8	97 3/8	12	5 3/8	3	132	14	4 1/2	D	5/8	60	646
JIABF3-10-10-500	500	10	10	500	13 5/8	39 5/8	97 3/8	12	5 3/8	3	132	14	4 1/2	D	5/8	60	666
JIABF3-12-10-500	500	10	12	500	13 5/8	57 3/4	82 1/4	15	5 3/8	3	135	16	4 1/2	E	5/8	60	877
JIABF3-14-10-500	500	10	14	500	17 1/4	57 3/4	84 3/4	17 1/2	5 3/8	3	137 1/2	18	4 1/2	E	5/8	60	919
JIABF3-16-10-500	500	10	16	500	17 1/4	57 3/4	84 3/4	17 1/2	5 3/8	3	137 1/2	22	4 1/2	E	5/8	60	939
JIABF3-4-12-500	500	12	4	500	9 3/4	31 5/8	126 3/8	9	5 3/8	3	153	8	4 1/2	D	5/8	48	679
JIABF3-6-12-500	500	12	6	500	9 3/4	31 5/8	126 3/8	9	5 3/8	3	153	14	4 1/2	D	5/8	48	699
JIABF3-8-12-500	500	12	8	500	13 3/4	39 5/8	121 3/8	12	5 3/8	3	153	14	4 1/2	D	5/8	60	748
JIABF3-10-12-500	500	12	10	500	13 5/8	39 5/8	121 3/8	12	5 3/8	3	156	14	4 1/2	D	5/8	60	768
JIABF3-12-12-500	500	12	12	500	13 5/8	57 3/4	106 1/4	15	5 3/8	3	156	16	4 1/2	E	5/8	60	981
JIABF3-14-12-500	500	12	14	500	17 1/4	57 3/4	108 3/4	17 1/2	5 3/8	3	159	18	4 1/2	E	5/8	60	1024
JIABF3-16-12-500	500	12	16	500	17 1/4	57 3/4	108 3/4	17 1/2	5 3/8	3	161 1/2	22	4 1/2	E	5/8	60	1044
JIABF3-4-14-500	500	14	4	500	9 3/4	31 5/8	150 3/8	9	5 3/8	3	161 1/2	8	4 1/2	D	5/8	48	716
JIABF3-6-14-500	500	14	6	500	9 3/4	31 5/8	150 3/8	9	5 3/8	3	177	14	4 1/2	D	5/8	48	736
JIABF3-8-14-500	500	14	8	500	13 3/4	39 5/8	145 3/8	12	5 3/8	3	177	14	4 1/2	D	5/8	60	831
JIABF3-10-14-500	500	14	10	500	13 5/8	39 5/8	145 3/8	12	5 3/8	3	180	14	4 1/2	D	5/8	60	851
JIABF3-12-14-500	500	14	12	500	13 5/8	57 3/4	130 1/4	15	5 3/8	3	180	16	4 1/2	E	5/8	60	1085
JIABF3-14-14-500	500	14	14	500	17 1/4	57 3/4	132 3/4	17 1/2	5 3/8	3	185 1/2	18	4 1/2	E	5/8	60	1128
JIABF3-16-14-500	500	14	16	500	17 1/4	57 3/4	132 3/4	17 1/2	5 3/8	3	185 1/2	22	4 1/2	E	5/8	60	1148



MODEL NUMBER	SWL	HUB	SPAN	TRACK SIZE	DIM D (ins)	DIM B1 (ins)	DIM F (ins)	DIM H (ins)	DIM G (ins)	DIM T (ins)	DIM C (ins)	DIM W1 (ins)	DIM W2 (ins)	BASE PLATE (ins)	BOLT SIZE (ins)	DIM M (ins)	OVERALL WEIGHT (lbs)
JIABF3-4-8-1000	1000	8	4	600	10 5/8	31	78 7/8	9	5 7/8	3 5/8	105	10	7	E	3/4	60	628
JIABF3-6-8-1000	1000	8	6	600	10 5/8	31	78 7/8	9	5 7/8	3 5/8	105	14	7	E	3/4	60	653
JIABF3-8-8-1000	1000	8	8	600	10 5/8	39 5/8	73 3/8	12	5 7/8	3 5/8	108	16	7	E	3/4	66	715
JIABF3-10-8-1000	1000	8	10	600	16 5/8	56 3/4	59 3/4	15	5 7/8	3 5/8	111	16	7	E	3/4	72	775
JIABF3-12-8-1000	1000	8	12	600	16 5/8	56 3/4	64 3/8	20	5 7/8	3 5/8	116	18	7	E	3/4	72	840
JIABF3-14-8-1000	1000	8	14	600	19 5/8	78	42 7/8	20	5 7/8	3 5/8	116	22	7	F	3/4	72	961
JIABF3-16-8-1000	1000	8	16	600	17 1/4	57 3/4	63 1/4	20	5 7/8	3 5/8	116	24	7	F	3/4	72	992
JIABF3-4-10-1000	1000	10	4	600	10 5/8	31	102 7/8	9	5 7/8	3 5/8	129	10	7	E	3/4	60	732
JIABF3-6-10-1000	1000	10	6	600	10 5/8	31	102 7/8	9	5 7/8	3 5/8	129	14	7	E	3/4	60	757
JIABF3-8-10-1000	1000	10	8	600	13 5/8	39 5/8	97 3/8	12	5 7/8	3 5/8	132	16	7	E	3/4	66	819
JIABF3-10-10-1000	1000	10	10	600	16 5/8	56 1/4	83 3/4	15	5 7/8	3 5/8	135	16	7	E	3/4	72	879
JIABF3-12-10-1000	1000	10	12	600	16 5/8	56 3/4	88 1/4	20	5 7/8	3 5/8	140	18	7	E	3/4	72	944
JIABF3-14-10-1000	1000	10	14	600	16 5/8	78	66 7/8	20	5 7/8	3 5/8	140	22	7	F	3/4	72	1076
JIABF3-16-10-1000	1000	10	16	600	17 1/4	57 3/4	87 1/4	20	5 7/8	3 5/8	140	24	7	F	3/4	72	1107
JIABF3-4-12-1000	1000	12	4	600	10 5/8	31	126 7/8	9	5 7/8	3 5/8	153	10	7	E	3/4	60	836
JIABF3-6-12-1000	1000	12	6	600	10 5/8	31	126 7/8	9	5 7/8	3 5/8	153	14	7	E	3/4	60	861
JIABF3-8-12-1000	1000	12	8	600	13 5/8	39 5/8	121 3/8	12	5 7/8	3 5/8	156	16	7	E	3/4	66	923
JIABF3-10-12-1000	1000	12	10	600	16 5/8	56 1/4	107 3/4	15	5 7/8	3 5/8	159	16	7	E	3/4	72	983
JIABF3-12-12-1000	1000	12	12	600	16 5/8	56 3/4	112 1/4	20	5 7/8	3 5/8	164	18	7	E	3/4	72	1048
JIABF3-14-12-1000	1000	12	14	600	19 5/8	78	90 7/8	20	5 7/8	3 5/8	164	22	7	F	3/4	72	1189
JIABF3-16-12-1000	1000	12	16	600	17 1/4	57 3/4	111 1/4	20	5 7/8	3 5/8	164	24	7	F	3/4	72	1220
JIABF3-4-14-1000	1000	14	4	600	10 5/8	31	150 7/8	9	5 7/8	3 5/8	177	10	7	E	3/4	60	940
JIABF3-6-14-1000	1000	14	6	600	10 5/8	31	150 7/8	9	5 7/8	3 5/8	177	14	7	E	3/4	60	965
JIABF3-8-14-1000	1000	14	8	600	13 5/8	39 5/8	145 3/8	12	5 7/8	3 5/8	180	16	7	E	3/4	66	1026
JIABF3-10-14-1000	1000	14	10	600	16 5/8	56 1/4	131 3/4	15	5 7/8	3 5/8	183	16	7	E	3/4	72	1087
JIABF3-12-14-1000	1000	14	12	600	16 5/8	56 3/4	136 1/4	20	5 7/8	3 5/8	188	18	7	E	3/4	72	1293
JIABF3-14-14-1000	1000	14	14	600	19 5/8	78	114 7/8	20	5 7/8	3 5/8	188	22	7	F	3/4	72	1333
JIABF3-16-14-1000	1000	14	16	600	17 1/4	57 3/4	135 1/4	20	5 7/8	3 5/8	188	24	7	F	3/4	72	1364

### Finish

Powder coated for long life protection. Jib Arms in Yellow (RAL1003) and Floor Mounted Posts in Gray (RAL7030). Alternative finishes such as stainless steel, HDG and special paint are also available upon request.

### Base design calculations

The concrete base sizes specified are valid for C20/25 reinforced concrete (minimum compressive cube strength 25N/mm<sup>2</sup>) or better.

The concrete base should extend to at least the dimensions specified from the centre of the jib crane post, and must be free of other fixtures, cracks and expansion joints etc.

Floor bolts should be grade 8.8 and used with Hilti HIT-RE 500 Epoxy resin. Other resins brands are available but their suitability should be checked before use.

Floor bolt loads quoted are un-factored.

### Service Class

All our workstation jibs are suitable are designed for service class A1, A2 and A3. Higher service class conditions can be accommodated – please contact us if a higher service class is required.

### Design Standards

All our workstation jibs are designed in accordance with EN 13001-1, 13001-2 & 13001-3.1

# JIABN - IBEAM JIB CRANES

## 360° MAXIMUM ROTATION



### JIAB-N JIB CRANES

Extending the capacity of the **MET-TRACK**® Workstation Jib Crane we also offer a comprehensive range of I-Beam style solutions. With standard capacities from ¼ ton to 5 ton we are also able to offer many non standard capacities and sizes.

In the style of the Workstation Jibs, the JIAB-N range utilizes a roller unit for the smooth rotation around the post. Simple to fit rotational stops set the maximum working angle unless 360° rotation required.

Easy to install, the column and arm come as separate pieces with lifting points built in for easy manoeuvrability.



### Alternative Configurations

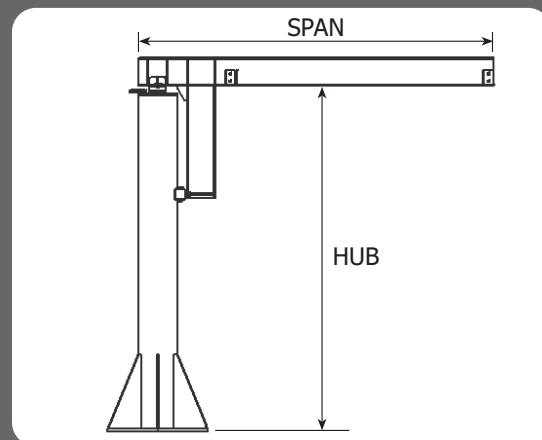
- Over-braced Jib Cranes
- Over and Under-Braced Wall

### Mounted Jib Cranes

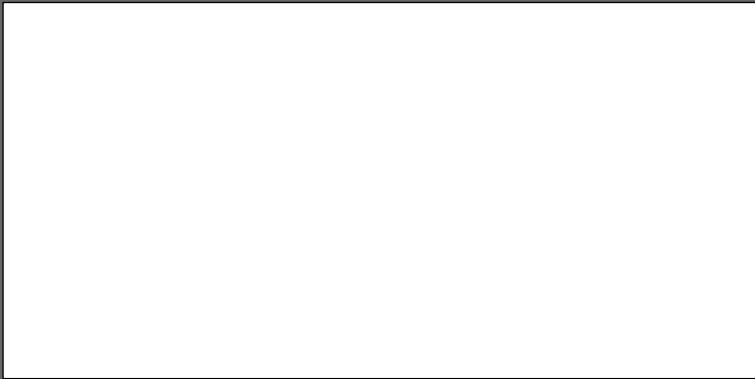
- Mast Type Jib Cranes
- Travelling Jib Crane

### Optional Equipment

- Powered Rotation
- C Rail Festoon Systems
- Outdoor and Marine Finishes







**Toll Free:** 877-830-9803  
**Email:** [sales@metreel.com](mailto:sales@metreel.com) **Web:** [www.metreel.com](http://www.metreel.com)

M168-0311

