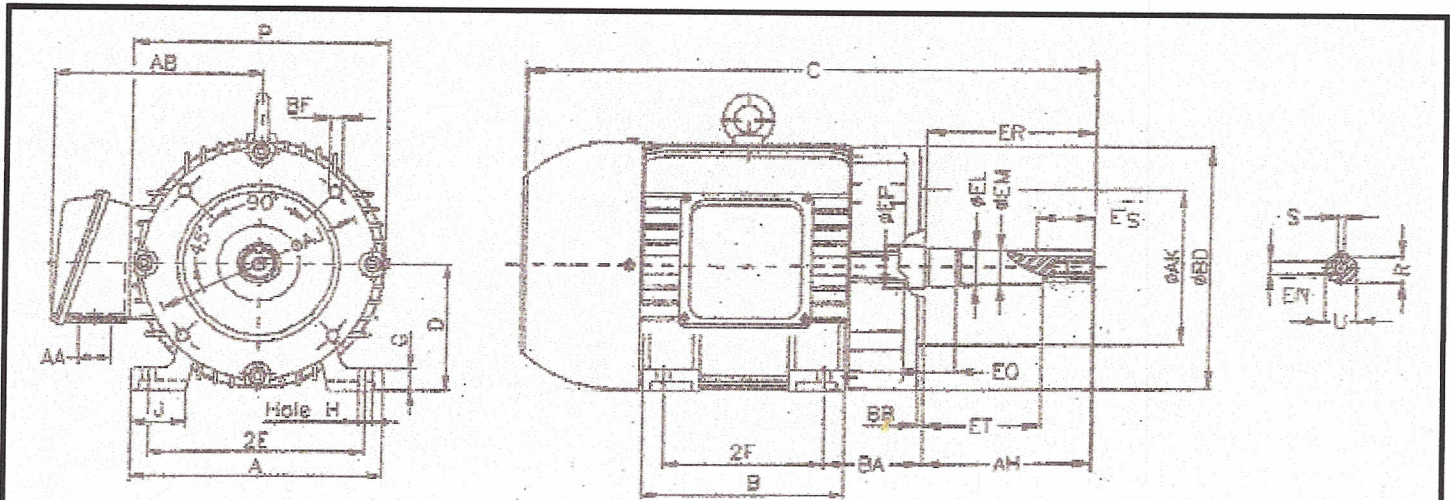


NEMA JM Pump Dimensional Data



bulletin - #231



Motor Dimensional Data

All dimensions are in inches

Frame	A	B	BA	C1	C2	AH	U	D	2E	2F	G	H	J	P	AB	AA
143JM	7.00	6.00	2.75	14.50	15.50	4.25	0.875	3.50	5.50	4.00	0.51	0.34	1.45	7.40	6.5	3/4
145JM				15.50	16.50					5.00						
182JM	9.00	6.50	3.50	16.80	17.70	4.25	0.875	4.50	7.50	4.50	0.67	0.41	2.04	9.37	7.5	3/4
184JM		7.50		17.50	18.60					5.50						
213JM	10.50	7.50	4.25	19.90	18.88	4.25	0.875	5.25	8.50	5.50	0.79	0.53	2.45	10.90	8.3	1
215JM		9.00		23.40	20.88					7.00						
254JM	12.50	10.80	4.75	24.60	24.70	5.25	1.250	6.25	10.00	8.25	0.87	0.53	2.87	13.00	10.4	1 1/4
256JM		12.50		26.40	26.45					10.00						
284JM	14.00	12.50	4.75	28.60	27.23	2.25	1.250	7.00	11.00	9.50	0.90	0.53	2.75	14.10	13.8	1 1/2
286JM		14.00		30.10	28.73					11.00						
324JM	14.00	15.50	5.25	30.30	31.70	5.25	1.250	8.00	12.50	10.50	1.10	0.66	2.75	15.63	14.8	2
326JM				31.80	33.30					12.00						
364JM	18.00	15.25	5.88	32.88	33.13	5.25	1.250	9.00	11.00	11.25	1.13	0.66	2.95	17.56	16.1	4
365JM		16.25		33.88	36.53					12.25						
404JM	20.00	16.25	5.88	35.25	36.00	5.25	1.250	10.00	16.00	12.25	1.34	0.81	3.15	19.00	18.1	4
405JM		17.75		36.75	36.00					13.75						

Flange & Shaft Detail

AA dimension is nominal size of conduit hole

Frame	R	S	EN	AJ	AK	BB	BD	BF	EL	EM	EP	EQ	ER	ES	ET
143JM	0.764	0.188	3/8-16	5.875	4.500	0.156	6.62	3/8-16	1.156	1.000	1.156	0.625	4.25	1.65	2.875
145JM		0.190													
182JM	0.764	0.188	3/8-16	5.875	4.500	0.156	6.62	3/8-16	1.250	1.000	1.250	0.625	4.25	1.65	2.875
184JM		0.190													
213JM	0.764	0.188	1/2-13	7.250	8.500	0.312	9.00	1/2-13	1.250	1.000	1.750	0.625	4.25	1.65	2.875
215JM		0.190													
254JM	1.105	0.252	1/2-13	7.250	8.500	0.312	10.00	1/2-13	1.750	1.375	1.750	0.625	5.25	2.53	3.000
256JM		0.250													
284JM	1.105	0.252	1/2-13	11.00	12.500	0.312	14.00	5/8-11	1.750	1.375	2.125	0.625	5.25	2.53	3.000
286JM		0.250													
324JM	1.105	0.252	1/2-13	11.00	12.500	0.312	14.00	5/8-11	1.750	1.375	2.125	0.625	5.25	2.53	3.000
326JM		0.250													
364JM	1.105	0.252	1/2-13	11.00	12.500	0.312	14.00	5/8-11	1.750	1.375	2.125	0.625	5.25	2.53	3.000
365JM		0.250													
404JM	1.105	0.252	1/2-13	11.00	12.500	0.312	14.00	5/8-11	1.750	1.375	2.125	0.625	5.25	2.53	3.000
405JM		0.250													